

JAHANNOOR

EMOTIONAL POWER OF LIGHT

2024

JahanNoor

Emotional Power of Light

General Catalog

Index

● About Jahannoor	4
● Weatherproof series	6
● Mono light Weatherproof series (Outdoor application)	8
● Dalahoo Weatherproof series (Indoor application)	12
● Taftan Stainless Steel weatherproof series	16
● Himalia PC weatherproof series	20
● Damavand GRP weatherproof series	24
● Explosion Proof series	28
● Victor	30
● Linear series (Indoor Office application)	34
● Sophia	36
● LED panel series (Indoor Office application)	40
● Backlight	42
● Lighting Poles	44
● Lighting Towers	48
● Multi-Application Series	52
● Rock Road	54
● Junction boxes	58
● Industrial Cable gland	60
● Contact us	62

Jahan Noor reserves the right to modify and change the content of this Catalogue without prior Notification. Please check details with Sales Engineering dept.

About JahanNoor

Jahan Noor Lighting Ind. was officially established on 1966 as a local manufacturer. During past decade, Jahan Noor has been focused on Lighting calculation, Offering Quality Luminaires to Industrial and Petrochemical projects. Our full commitment to product quality, durability, performance, and project orientation are some of outstanding features offered by Jahan Noor. Our commitment to continuous improvement makes Jahan Noor as one of the lighting challengers to invest in new technology, machinery, tooling and high-quality components. In Addition to its own production lines in Middle east, in order to serve better in terms of lead time, shipment and delivery to projects, Jahan Noor has developed a network of Quality manufacturers around the world to make sure that affordable products are available within a reasonable time zone.

JahanNoor outstanding features:

IMS certified by DQS Germany (ISO 9000, ISO 14000, ISO 18001)

ATEX certified EX products

All produced and supplied Jahan Noor luminaires are manufactured to International standards IEC 60598, IEC 62722-2-1, IEC 60079

Lighting solution and project oriented

Precise quality control

weatherproof Series

When it comes to Industrial and Environments with high quality demands, choosing a weatherproof Luminaire with IP65 and above is always a concern. It means the products are well-protected against water jets and dust, making them suitable for both indoor and outdoor applications. The fixture is tightly sealed to prevent any ingress, and the electrical connections and components are shielded from external elements. Through the upcoming pages, we will introduce JahanNoor range of weatherproof products to our valued customers.

MONO Light

weatherproof Series



- **MONO Light**

MONO Light Luminaires are designed to be mounted in Outdoor, Industrial Areas, moisture zones, Parking places, Utility areas and Sub stations.

Special design of Mono Light enables the End Users to apply this product in Parking Places, Utility areas as well as Walkways. High efficiency, Smooth and homogenic light Distribution, Glare control, with a quality and professional selection of fine Electrical components are just a few remarkable features of Mono Light.

- **Certificates**

IP65
IK08

- **Housing**

Made of Extruded Aluminum Profile with excellent resistant against heavy Mechanical and Heat Shocks. Coating by automatic powder coating system RAL 7035 End Caps made of powder coated Die Cast Aluminum

- **Diffuser**

Made of Extruded Polycarbonate Profile
Sealants made of silicon gasket with premium durability to ensure IP maintenance in life time zone

- **Electrical components**

Fine quality Constant current LED Driver, Flicker Free, _ PF>0.9
Internal wiring made of PVC covered copper wires
Screwless Terminal Block made of Polycarbonate
Fine Quality SMD-LED module, nominate life time 100.000 hours at L70 with excellent efficiency
Color Temperature CCT 4000 K (6000 K as an Option by Order)



- **Nominated Voltage and Frequency**

220-240 V. AC
50-60 HZ

- **Entries**

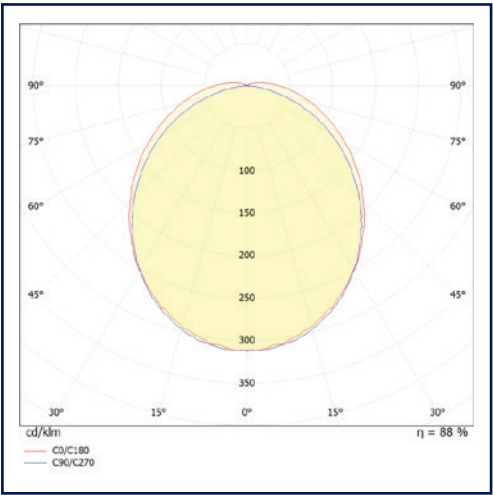
One M20 Cable Entry at one End equipped with one M20 Polyamide Cable Gland

- **Mounting**

Mono Light Luminaire are easily applied as Surface mounted, Pendant, Wall Mounted and pole/Bracket mounted

- **Options (by Order)**

Through Wiring, Looping Wiring
Extra M20 or M25 Entry
Brass made Nickel Plate Cable Gland
DALI protocol LED Driver Nickel Plated
Emergency Back Up Battery with 90 min. or 180 min. autonomy
Selection of different mounting accessories suitable for Wall Mounting, Surface or Pendant mounting, Cable Tray, Lighting Pole and Bracket, Chain-Rod



Train station



Factory



Workshop

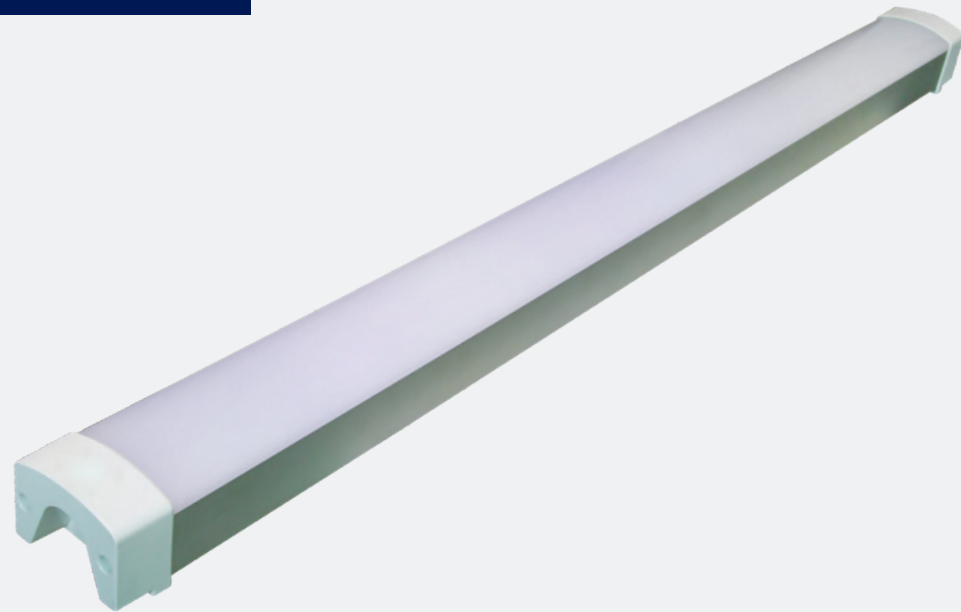


Refinery

Reference	Power (Watt)	Luminaire Luminous Flux (lm)	Efficiency (lm/W)	CCT	CRI	Dimension (mm) LxWxH			Mounting Type
MONOLIGHT 24W/3240Lm/600 mmLED SMD-S	24 W	3240 lm	~135 lm/W	4000	80	600	80	70	Surface Mounted
MONOLIGHT 48W/6480Lm /1200 mm-LED SMD-S	48W	6480 lm	~ 135 lm/W	4000	80	1200	80	70	Surface Mounted

DALAHOO

weatherproof Series



● Dalahoo

Dalahoo Luminaires are designed to be mounted in Indoor and Parking Areas. Well design of Dalahoo enables the Customers to apply this product in Parking Places. Fine efficiency, Smooth and homogenic light Distribution, Glare control, with a quality and professional selection of fine Electrical components are just a few remarkable features of Dalahoo series.

● Certificates

IP65
IK08

● Housing

Made of Extruded Aluminum Profile with excellent resistant against heavy Mechanical and Heat Shocks.
Coating by automatic powder coating system RAL 7035
End Caps made of PMMA material

● Diffuser

Made of Extruded Polycarbonate Profile
Sealants made of silicon gasket with premium durability to ensure IP maintenance in life time zone

● Electrical components

Fine quality Constant current LED Driver,
Flicker Free, - PF>0.9
Internal wiring made of PVC covered copper wires
Screwless Terminal Block made of Polycarbonate
Fine Quality SMD-LED module, nominate life time 100.000 hours at L70 with excellent efficiency
Color Temperature CCT 4000 K (6000 K as an Option by Order)

● Nominated Voltage and Frequency

220-240 V. AC
50-60 HZ

● Entries

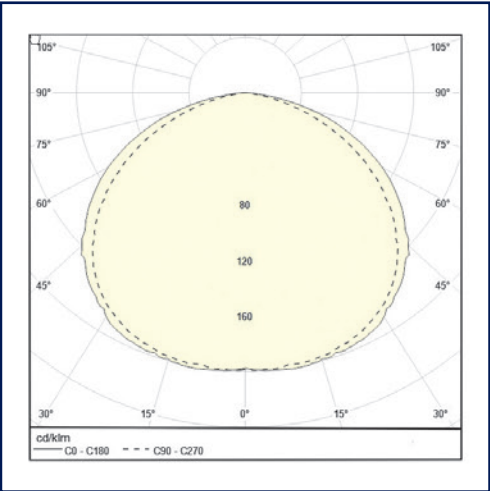
One M20 Cable Entry at one End equipped with one M20 Polyamide Cable Gland

● Mounting

Dalahoo Luminaire are easily applied as Surface mounted, Pendant, Wall Mounted and pole/Bracket mounted

● Options (by Order)

Through Wiring, Looping Wiring
Extra M20 or M25 Entry
Brass made Nickel Plated Cable Gland
DALI protocol LED Driver
Emergency Back Up Battery with 90 min. or 180 min. autonomy
Selection of different mounting accessories suitable for Wall Mounting, Surface or Pendant mounting, Cable Tray, Lighting Pole and Bracket, Chain-Rod



Factory



Warehouses



Workshop

Reference	Power (Watt)	Lumi- naire Lu- minous Flux (lm)	Efficien- cy (lm/W)	CCT	CRI	Dimension (mm) LxWxH			Mounting Type
DALAH00 10W/250Lm /600 mm-LED SMD-S	10 W	250 lm	~25 lm/W	4000	80	400	95	70	Surface Mounted
DALAH00 24W/3240Lm/600 mm-LED SMD-S	24 W	3240 lm	~135 lm/W	4000	80	600	95	70	Surface Mounted
DALAH00 48W/6480Km /1200 mm-LED SMD-S	48W	6480 lm	~ 135 lm/W	4000	80	1200	95	70	Surface Mounted

TAFTAN

Stainless steel
weatherproof Series



- **Taftan**

Taftan Luminaires are designed to be mounted in Outdoor, Industrial Areas, moisture zones, Utility areas and Sub stations.

Genius design of Taftan Light enables the Oil, Gas and Petrochemical plants to apply this product in Utility areas as well as Walkways. High efficiency, Smooth and homogenic light Distribution, Glare control, with a quality and professional selection of fine Electrical components are just a few remarkable features of Taftan series.

- **Certificates**

IP65

- **Housing**

Made of Stainless-Steel (SS304) sheet with excellent resistant against Heat Shocks. Coating by automatic powder coating system RAL 7035 (On request as an option)

- **Cover**

Made of Tempered sand blasted Glass to obtain glare control
Sealants made of silicon gasket
Clips made of Stainless Steel

- **Electrical components**

Fine quality Constant current LED Driver, Flicker Free, - PF>0.9
Internal wiring made of PVC covered copper wires
Screwless Terminal Block made of Polycarbonate
Fine Quality SMD-LED module, nominate life time 100.000 hours at L70 with fine efficiency
Color Temperature CCT 4000 K (6000 K as an Option by Order)

- **Nominated Voltage and Frequency**

220-240 V. AC
50-60 HZ

- **Entries**

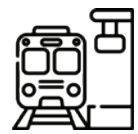
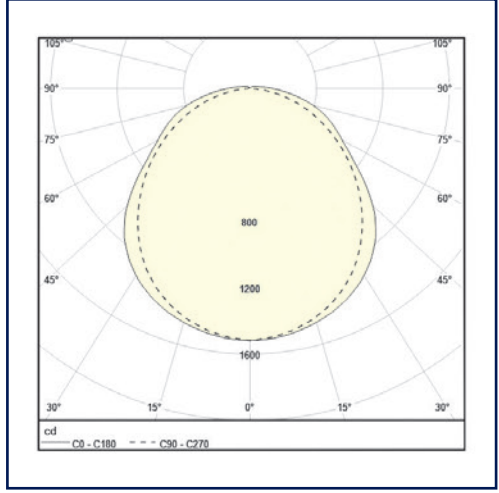
One M20 Cable Entry at each end equipped with one M20 Brass made Polyamide cable gland

- **Mounting**

Taftan Luminaire are easily applied as Surface mounted, Pendant, Wall Mounted and pole/Bracket mounted

- **Options (by Order)**

Through Wiring, Looping Wiring
DALI protocol LED Driver
Emergency Back Up Battery with 90 min. or 180 min. autonomy
Selection of different mounting accessories suitable for Wall Mounting, Surface or Pendant mounting, Cable Tray, Lighting Pole and Bracket, Chain-Rod



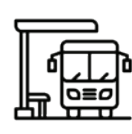
Train station



Factory



Refinery



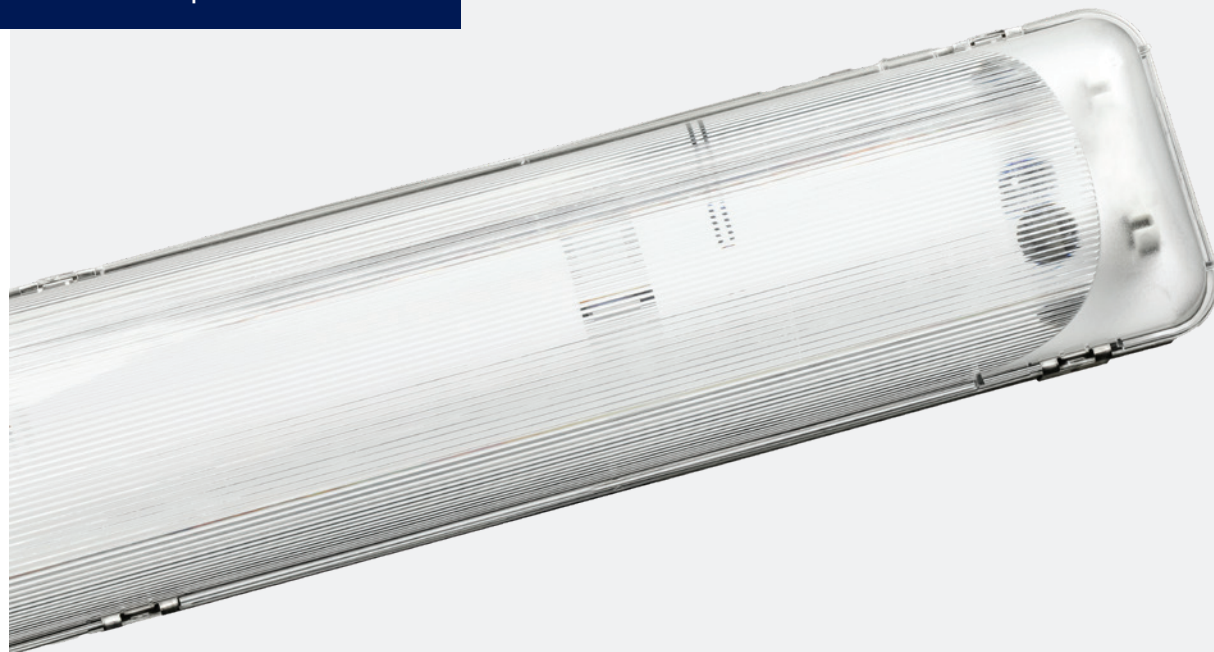
Bus station

Reference	Power (Watt)	Lumi- naire Lu- minous Flux (lm)	Efficien- cy (lm/W)	CCT	CRI	Dimension (mm) LxWxH			Mounting Type
TAFTAN 24W/3240lm/600 mm-LED SMD-S	24 W	3240 lm	~135 lm/W	4000	80	650	200	90	Surface Mounted
TAFTAN 48W/6480lm /1200 mm-LED SMD-S	48W	6240 lm	~ 135 lm/W	4000	80	1300	200	90	Surface Mounted



HIMALIA

weatherproof Series



- **Himalia**

Himalia Luminaires are designed to be mounted in Indoor, moisture zones, Parking places. Fine design of Himalia enables the End Users to apply this product in Parking Places and Utility areas. High efficiency, Smooth and homogenic light Distribution, Glare control, with a quality and professional selection of fine Electrical components are just a few remarkable features of Himalia series.

- **Certificates**

IP65
IK08

- **Housing**

Made of Polycarbonate with excellent resistant against heavy Mechanical and Heat Shocks.

- **Diffuser**

Made of Polycarbonate with excellent resistant against heavy Mechanical and Heat Shocks. Sealants made of Polyurethane gasket with premium durability to ensure IP maintenance in life time zone. Clips made of Stainless-Steel.

- **Electrical components**

Fine quality Constant current LED Driver, Flicker Free, - PF>0.9
Internal wiring made of PVC covered copper wires
Screwless Terminal Block made of Polycarbonate
Fine Quality SMD-LED module, nominate life time 100.000 hours at L70 with excellent efficiency
Color Temperature CCT 4000 K (6000 K as an Option by Order)

- **Nominated Voltage and Frequency**

220-240 V. AC
50-60 HZ

- **Entries**

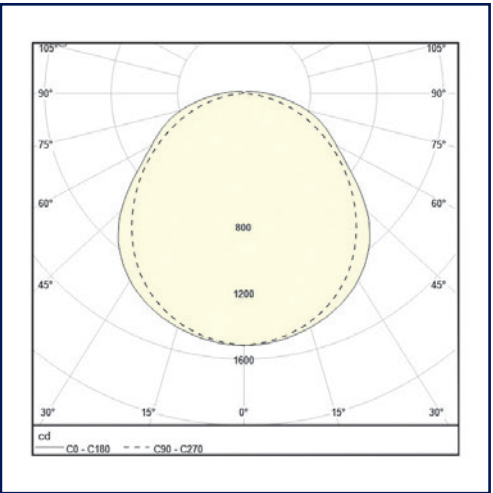
One M20 Cable Entry at each end

- **Mounting**

Himalia Luminaire are easily applied as Surface mounted, Pendant, Wall Mounted and pole/Bracket mounted

- **Options (by Order)**

Through Wiring, Looping Wiring
Extra M20 or M25 Entry
Brass made Nickel Plated or Polyamide Cable Gland
DALI protocol LED Driver
Emergency Back Up Battery with 90 min. or 180 min. autonomy
Selection of different mounting accessories suitable for Wall Mounting, Surface or Pendant mounting, Cable Tray, Lighting Pole and Bracket, Chain-Rod



Train station



Factory



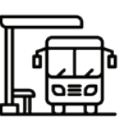
Warehouses



Workshop



Refinery



Bus station

Reference	Power (Watt)	Lumi- naire Lu- minous Flux (lm)	Efficien- cy (lm/W)	CCT	CRI	Dimension (mm) LxWxH			Mounting Type
HIMALIA 24W/3240Lm/600 mm-LED SMD-S	24 W	3240 lm	~135 lm/W	4000	80	660	145	101	Surface Mounted
HIMALIA 48W/6480Lm /1200 mm-LED SMD-S	48W	6480 lm	~ 135 lm/W	4000	80	1277	145	101	Surface Mounted

DAMAVAND

weatherproof Series

- **Damavand**

Damavand Luminaires are designed to be mounted in Outdoor, Industrial Areas, moisture zones, Utility areas and Sub stations. Perfect design of Damavand enables the Oil, Gas and Petrochemical plants to apply this product in Utility areas as well as Walkways. High efficiency, Smooth and homogenic light Distribution, Glare control, with a quality and professional selection of fine Electrical components are just a few remarkable features of Damavand series.

- **Certificates**

IP65
IK08

- **Housing**

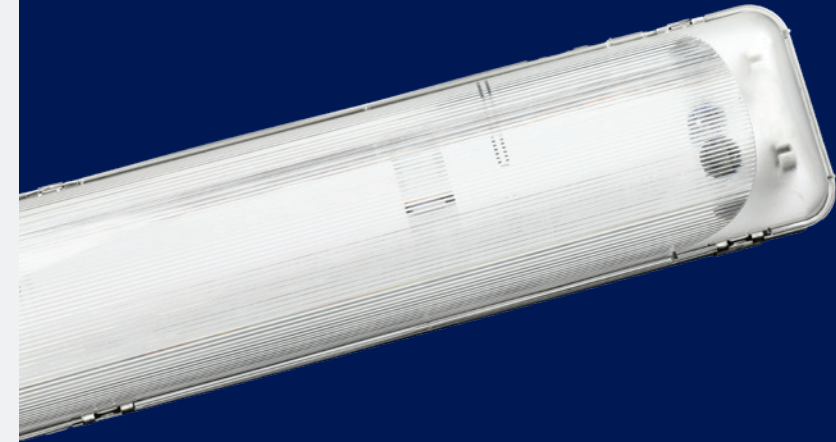
Made of Glass-fiber re-enforced polyester (GRP) with excellent resistant against heavy Mechanical and Heat Shocks.

- **Diffuser**

Made of Polycarbonate with excellent resistant against heavy Mechanical and Heat Shocks.
Sealants made of Polyurethane gasket with premium durability to ensure IP maintenance in life time zone.
Clips made of Stainless-Steel.

- **Electrical components**

Fine quality Constant current LED Driver, Flicker Free,
- PF>0.9
Internal wiring made of PVC covered copper wires
Screwless Terminal Block made of Polycarbonate
Fine Quality SMD-LED module, nominate life time 100.000 hours at L70 with excellent efficiency
Color Temperature CCT 4000 K (6000 K as an Option by Order)



- **Nominated Voltage and Frequency**

220-240 V. AC
50-60 HZ

- **Entries**

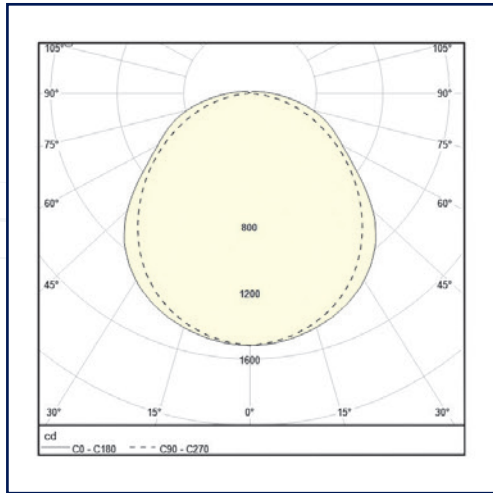
One M20 Cable Entry at one each end

- **Mounting**

Damavand Luminaire are easily applied as Surface mounted, Pendant, Wall Mounted and pole/Bracket mounted

- **Options (by Order)**

Through Wiring, Looping Wiring
Extra M20 or M25 Entry
Brass made Nickel Plated or Polyamide Cable Gland
DALI protocol LED Driver
Emergency Back Up Battery with 90 min. or 180 min. autonomy
Selection of different mounting accessories suitable for Wall Mounting, Surface or Pendant mounting, Cable Tray, Lighting Pole and Bracket, Chain-Rod



Train station



Factory



Refinery



Bus station

Reference	Power (Watt)	Lumi- naire Lu- minous Flux (lm)	Efficien- cy (lm/W)	CCT	CRI	Dimension (mm) LxWxH			Mounting Type
DAMAVAND 24W/3240Lm/600 mm-LED SMD-S	24 W	3240 lm	~135 lm/W	4000	80	660	145	101	Surface Mounted
DAMAVAND 48W/4800Lm /1200 mm-LED SMD-S	48W	6480 lm	~135 lm/W	4000	80	1277	145	101	Surface Mounted

Explosion Proof Series |

Sometimes there is a misconception of Explosion proof luminaires which comes from naming convention. Some may think that Explosion Proof Luminaires are resistant to explosions. However, this is not true. Instead, it refers to a light fixture's capacity to restrain the path of sparks and prevent external ignition in hazardous areas.

JahanNoor valued customers are invited to check upcoming pages and get information about Ex series.

VICTOR

Ex Series



• Victor

Victor Luminaires are designed to be mounted in Hazardous Areas, Zone 1 , 21 , Zone 2 , 22 specially Outdoor, Petrochemical and Refinery Areas.. Technical design of Victor enables the Oil, Gas and Petrochemical Plants to apply this product in Potentially Explosive environment, Utility areas as well as Walkways. High efficiency, Smooth and homogenic light Distribution, Glare control, with a quality and professional selection of fine Electrical components are just a few remarkable features of Victor series.

• Certificates

IP66
Ex d
ATEX (EU type examination)

• Housing

Made of Die Cast Aluminum with excellent resistant against heavy Mechanical and Heat Shocks.
Coating by automatic powder coating system RAL 7035
End Caps made of powder coated Die Cast Aluminum

• Cover

Made of Borosilicate tempered Glass
Diffuser made of Polycarbonate (for LED version)
Sealants made of special glues, silicone gaskets with premium durability to ensure IP and Ex maintenance in life time zone

• Electrical components

Fine quality Constant current LED Driver, Flicker Free, - PF>0.9
Internal wiring made of PVC covered copper wires
Screwless Terminal Block made of Polycarbonate
Fine Quality SMD-LED module, nominate life time 100.000 hours at L70 with excellent efficiency
Color Temperature CCT 4000 K (6000 K as an Option by Order)

• Nominated Voltage and Frequency

220-240 V. AC
50-60 HZ

• Entries

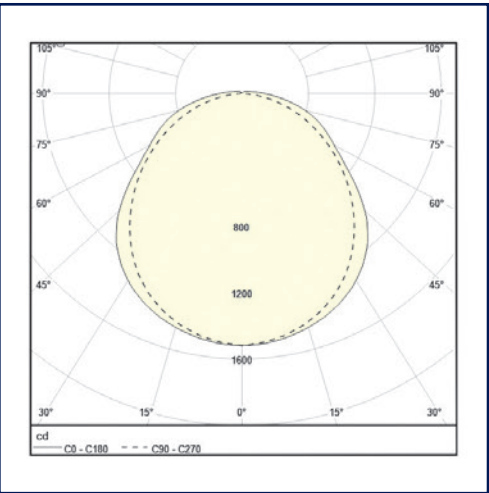
One M25 Cable Entry at one End equipped with one Ex M25 Brass made Nickel plated Cable Gland

• Mounting

Victor Luminaire are easily applied as Surface mounted, Pendant, Wall Mounted and pole/ Bracket mounted

• Options (by Order)

Through Wiring, Looping Wiring
Extra M25 Entry
Brass made Nickel Plate Cable Gland or Blind Plug
DALI protocol LED Driver
Emergency Back Up Battery with 90 min. or 180 min. autonomy
Selection of different mounting accessories suitable for Wall Mounting, Surface or Pendant mounting, Cable Tray, Lighting Pole and Bracket, Chain-Rod



Factory



Refinery

Reference	Power (Watt)	Lumi- naire Lu- minous Flux (lm)	Efficien- cy (lm/W)	CCT	CRI	Dimension (mm) LxWxH			Mounting Type
VICTOR 24W/3240Lm/600 mm-LED SMD-S	24 W	3240 lm	~135 lm/W	4000	80	740	140	140	Surface Mounted
VICTOR 48W/6480Lm /1200 mm-LED SMD-S	48W	6480 lm	~ 135 lm/W	4000	80	1330	140	140	Surface Mounted

Linear Series

It is of high importance to Designer Engineers to have variety of choices of Architectural lighting. Therefore, JahanNoor has designed and produced a type of Linear Lighting that uses extended, narrow light sources to create a linear beam of light. These fixtures are typically made of Extruded Aluminum profile and PC diffuser. They can be mounted on walls, ceilings, or floors. Beside, there is a choice of Back Light LED Panel available as general Lighting in Commercial and Administrative buildings.

SOPHIA

Linear Series



● Sophia

Sophia Luminaires are designed to be mounted in Indoor , Commercial and Administration Buildings. Elegant design of Sophia enables the End Users to apply this product walkway areas, Stores and Offices. High efficiency, Smooth and homogenic light Distribution, Glare control, with a quality and professional selection of fine Electrical components are just a few remarkable features of Sophia series.

● Housing

Made of Extruded Aluminum
Coating by automatic powder coating system RAL 9003

● Diffuser

Made of Polycarbonate with excellent Light transmission and glare control.

● Electrical components

Fine quality Constant current LED Driver, Flicker Free,
- PF>0.9
Internal wiring made of PVC covered copper wires
Screwless Terminal Block made of Polycarbonate
Fine Quality SMD-LED module, nominate life time
100.000 hours at L70 with excellent efficiency
Color Temperature CCT 4000 K (6000 K as an Option by Order)

● Nominated Voltage and Frequency

220-240 V. AC
50-60 HZ

● Entries

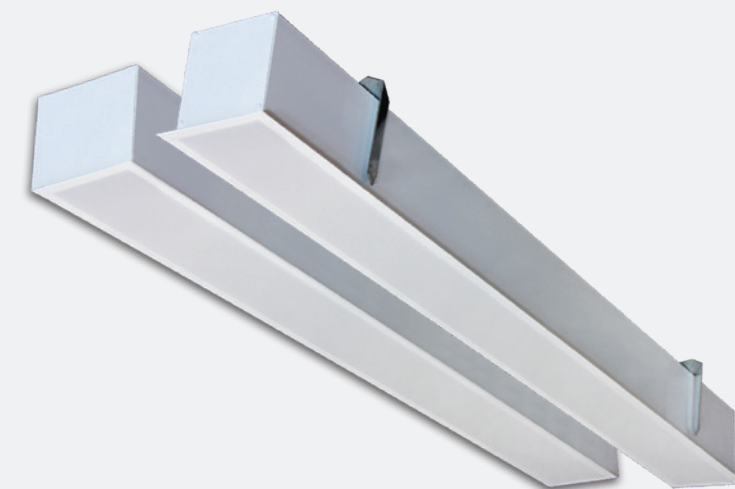
One M20 Cable Entry at Back side

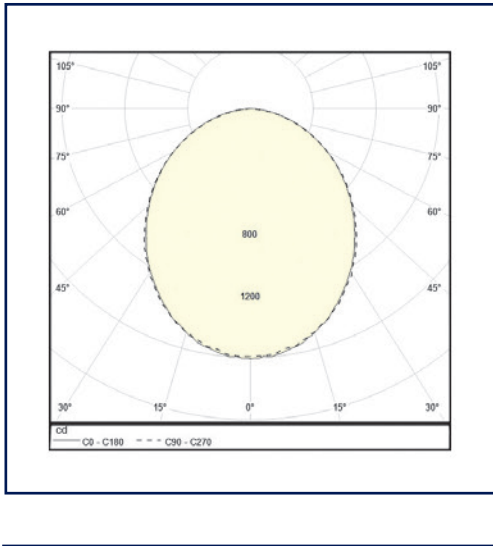
● Mounting

Sophia Luminaire Series are easily applied as Surface mounted, Pendant, and Recessed mounting.

● Options (by Order)

Through Wiring, Looping Wiring
DALI protocol LED Driver
Emergency Back Up Battery with 90 min.
or 180 min. autonomy





business center



office building

Reference	Power (Watt)	Luminaire Luminous Flux (lm)	Efficiency (lm/W)	CCT	CRI	Dimension (mm) LxWxH			Mounting Type
SOPHIA 24W/3240lm/600 mm-LED SMD-S	24 W	3240 lm	~135 lm/W	4000	80	580	120	90	Surface Mounted
SOPHIA 48W/6480lm/1200 mm-LED SMD-S	48W	6480 lm	~135 lm/W	4000	80	1170	120	90	Surface Mounted



LED Panel Series

Back Light Luminaires are designed to be mounted in Indoor, Commercial and Administration Buildings. Economic design of Back Light enables the End Users to apply this product walkway areas, Stores and Offices. High efficiency, Smooth and homogenic light Distribution, Glare control, with a quality and professional selection of fine Electrical components are just a few remarkable features of Back Light series.

Back Light

LED Panel Series



Back Light

Back Light Luminaires are designed to be mounted in Indoor, Commercial and Administration Buildings. Economic design of Back Light enables the End Users to apply this product walkway areas, Stores and Offices. High efficiency, Smooth and homogenic light Distribution, Glare control, with a quality and professional selection of fine Electrical components are just a few remarkable features of Back Light series.

Housing

Made of Steel sheet
Frame made of Extruded Aluminum
Coating by automatic powder coating system RAL 9016

Diffuser

Made of PMMA with fine Light transmission and glare control.

Electrical components

Fine quality Constant current LED Driver, Flicker Free, - PF>0.9
Internal wiring made of PVC covered copper wires
Screwless Terminal Block made of Polycarbonate
Fine Quality SMD-LED module, nominate life time 100.000 hours at L70 with excellent efficiency
Color Temperature CCT 4000 K (6000 K as an Option by Order)

Nominated Voltage and Frequency

220-240 V. AC
50-60 HZ

Mounting

Back Light Luminaire are easily applied as Recessed mounting, Surface mounting and 600x600 T- Profile

Options (by Order)

Through Wiring, Looping Wiring
DALI protocol LED Driver
Emergency Back Up Battery with 90 min. or 180 min. autonomy



business center



office building

Reference	Power (Watt)	Lumi- naire Lu- minous Flux (lm)	Efficien- cy (lm/W)	CCT	CRI	Dimension (mm) LxWxH			Mounting Type
BACK LIGHT 40W/4500Lm /600x600 mm-LED SMD-S	40 W	4500 lm	~110 lm/W	4000	80	595	595	25	Surface Mounted / Recessed Mounted
BACK LIGHT 60W/6350Lm /600x600 mm-LED SMD-S	60 W	6350 lm	~ 110 lm/W	4000	80	595	595	25	Surface Mounted/ Recessed Mounted

Lighting Brackets and Poles Series

Outdoor lighting systems using Lighting Poles and Towers can be used most effectively to illuminate Industrial areas. Open spaces require Towers and Poles to avoid clashes with structures and process machines inside Oil, Gas, Petrochemical and Industrial plants. Pole top lighting is also maximizing space with minimal structure. JahanNoor will introduce range of Lighting Poles, Brackets and Towers in the upcoming pages.

Lighting Brackets and Poles Series

- **Body Material**

Based on several requisitions for Lighting Poles, Jahan Noor has been busy with design and Production of Lighting Brackets and Poles for many national and international projects.

This product line is well prepared to offer different length of Poles (from 0.5 meter up to 11 meter) in Polygonal or Round shape.

- **Body Material**

Made of ST37 steel sheet or Pipes
Protection by Galvanization according to ASTM A123

- **Base Plate / Stiffeners / Heads and Baskets**

Made of ST37 steel sheet and Pipes
Protection by Galvanization according to ASTM A123

- **Electrical components**

Service door or JB plate according to Project specification

- **Mounting**

On Handrail, different structures and concrete foundation
(Calculation of foundation is available on request)

- **Options (by Order)**

Junction Box and Internal Electrical components



Lighting Towers Series

Outdoor lighting systems using Lighting Poles and Towers can be used most effectively to illuminate Industrial areas. Open spaces require Towers and Poles to avoid clashes with structures and process machines inside Oil, Gas, Petrochemical and Industrial plants. Pole top lighting is also maximizing space with minimal structure.

Jahan Noor will introduce range of Lighting Poles, Brackets and Towers in the upcoming pages.



Lighting Towers

Series

- **Lighting Towers**

Based on several requisitions for Lighting Towers, Jahan Noor has been busy with design and Production of Lighting Towers for outstanding national projects. This product line is well prepared to offer different length of Towers (from 12 meter up to 30 meter) in Polygonal shape. Towers come in Motorized or fixed crown with baskets including Ladder and Cages.

- **Body Material**

Made of ST37 steel sheet
Protection by Galvanization according to ASTM A123

- **Base Plate / Stiffeners / Heads and Baskets**

Made of ST37 steel sheet and profiles
Protection by Galvanization according to ASTM A123

- **Electrical components**

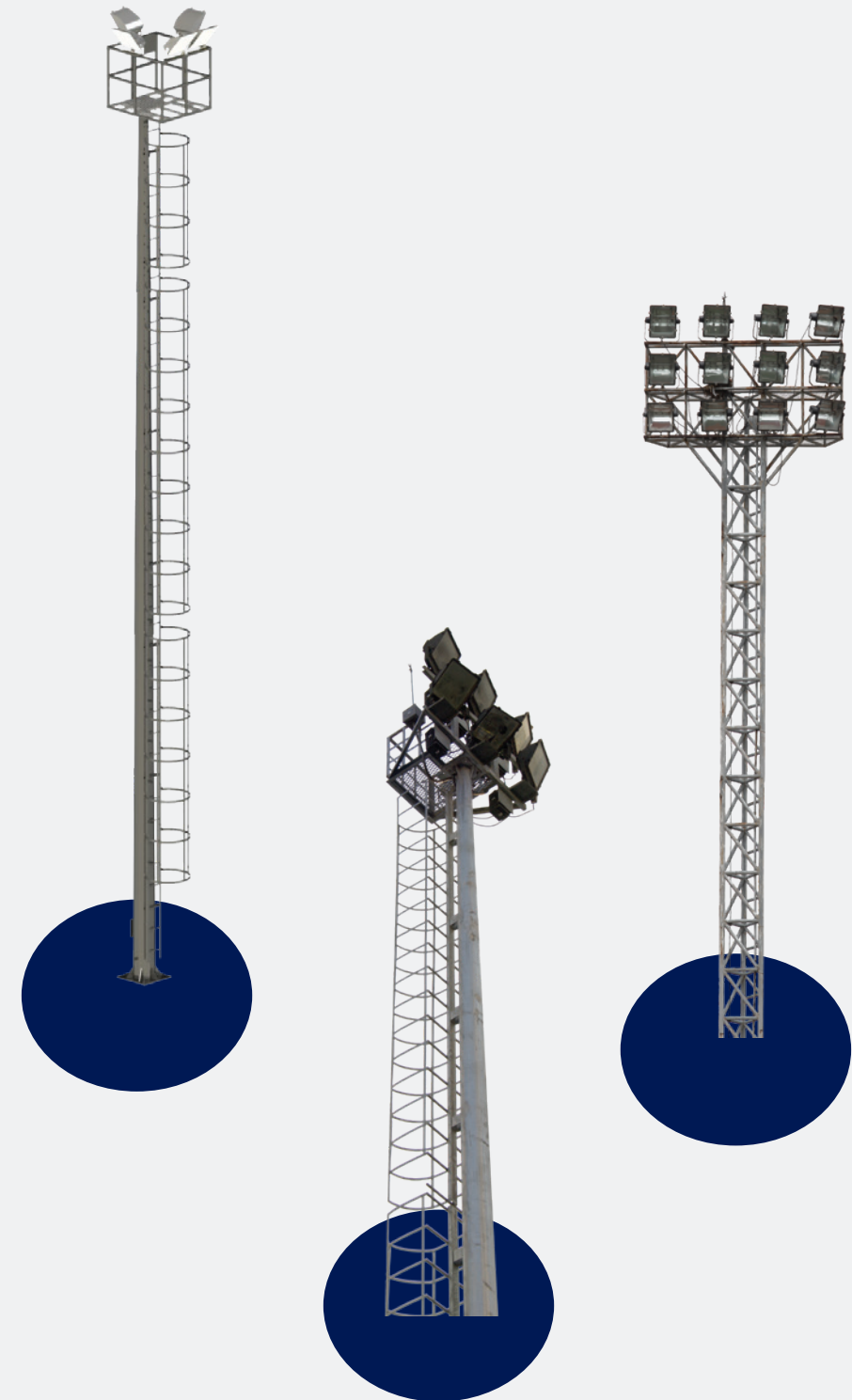
Service door or JB plate according to Project specification
Control station made of powder coated steel sheets including all on-off and control devices (for motorized version)

- **Mounting**

On concrete foundation (Calculation of concrete is available on request)

- **Options (by Order)**

Junction Box and Internal Electrical components



Multi-Application Series

In almost all of Industrial areas, in both Indoor and Outdoor application, it is required to have powerful and energy efficient luminaires that are designed to provide broad and intense illumination over a large area (open areas and /or indoor job shops). JahanNoor has designed a Multi-Application Luminaire which can be modified to be typically used to light up outdoor areas, such as stadiums, parking lots, and building facades, or for indoor applications such as warehouses, workshops, or large halls.

ROCK ROAD

Multi-Application Series

- **Rock Road**

Rock Road Luminaires are designed to be mounted in Outdoor, Industrial Areas, moisture zones, Parking lots, Tunnels as well as warehouse, Factories, Utility areas and Sub stations.

Special design of Rock Road enables the End Users to apply this product as a multi-application for both Indoor and Outdoor areas. High efficiency, Powerful and homogenic Illumination , with a quality and professional selection of fine Electrical components are just a few remarkable features of Rock Road.

- **Certificates**

IP65
IK08

- **Housing**

Made of Die Cast Aluminum with excellent resistant against heavy Mechanical and Heat Shocks.
Coating by automatic powder coating system RAL 7035.
Frame made Die Cast Aluminum

- **Cover**

Made of Heat and Shock resistant Glass
Sealants made of special silicon gasket with premium durability to ensure IP maintenance in life time zone

- **Electrical components**

Fine quality Constant current LED Driver, Flicker Free,
- PF>0.9
Internal wiring made of Flameproof covered copper wires
Screwless Terminal Block made of Polycarbonate
Fine Quality SMD-LED module, nominate life time 100.000 hours at L70 with excellent efficiency
Color Temperature CCT 4000 K (6000 K as an Option by Order)
LED lenses made of fine quality Polyamide



- **Nominated Voltage and Frequency**

220-240 V. AC
50-60 HZ

- **Entries**

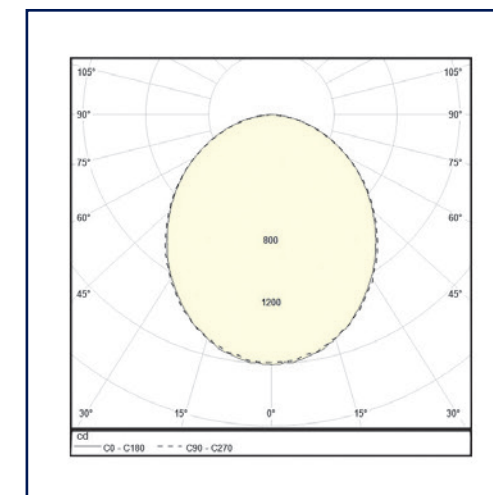
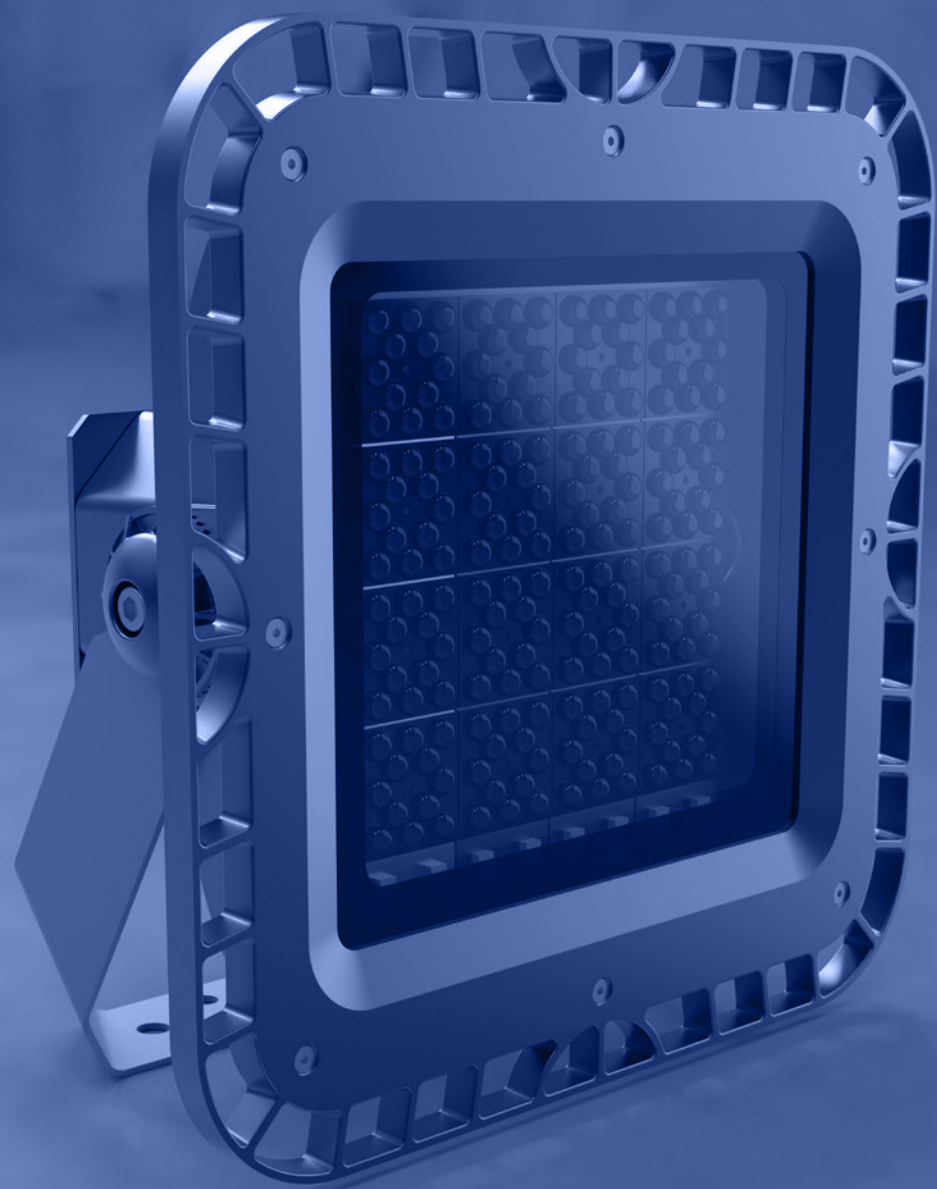
Two M20 Cable Entry at one end of external Junction Box

- **Mounting**

Rock Road Luminaire are easily applied as Wall mounted, Pendant, Pole/Bracket mounted and Tower mounted

- **Options (by Order)**

Through Wiring, Looping Wiring
Extra M20 or M25 Entry
Brass made Nickel Plate Cable Gland
Selection of different mounting accessories suitable for Wall Mounting, Surface or Pendant mounting, Cable Tray, Lighting Pole and Bracket, Chain-Rod



Train station



Factory



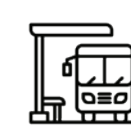
Warehouses



Workshop



Refinery



Bus station

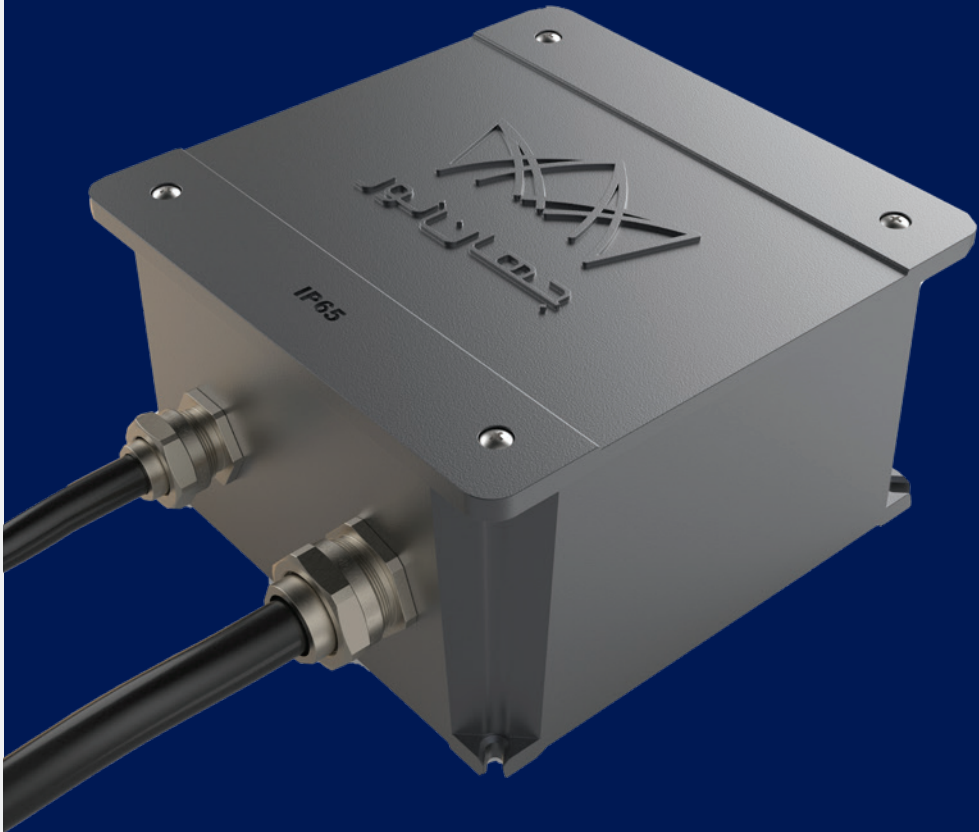
Reference	Power (Watt)	Luminaire Luminous Flux (lm)	Efficiency (lm/W)	CCT	CRI	Dimension (mm) LxWxH			Mounting Type
ROCKROAD 135/18000Lm LED SMD-S	135 W	18000 lm	~138 lm/W	4000	80	410	410	146	Surface Mounted
ROCKROAD 180/25000Lm LED SMD-S	180 W	25000 lm	~ 138 lm/W	4000	80	410	410	146	Surface Mounted

Junction boxes

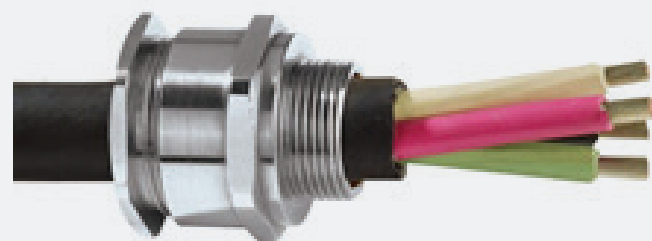
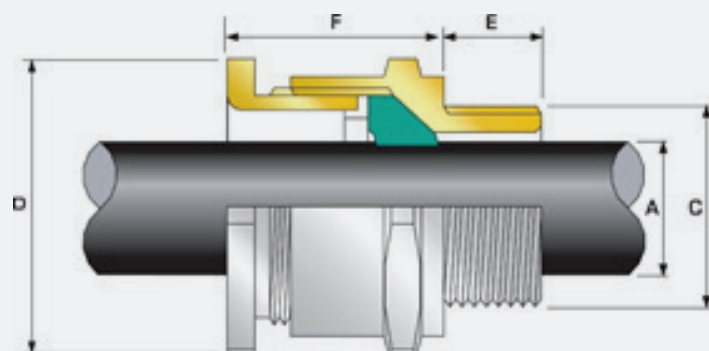
Technical Data

Junction boxes Technical Data	
Commercial series	IJB Series
Synthetical description	JUNCTION BOX
Protection degree IP	IP65
Protection degree IK	08
Material	DIE-CAST ALUMINIUM
Colour	GREY Raal 7035

Dimension(mm)			
Type	Length	Width	Height
IJB 15010	150	150	100
IJB 20070	200	200	70



Industrial Cable gland
Technical Data



Industrial Cable gland Technical Data	
Commercial series	ICG Series
Synthetical description	Cable glands
Protection degree IP	IP66
Material	Brass made (Nickel plated)

Cable Gland Size	Available Entry Threads "C" (Alternate Metric Thread Lengths Available)		Overall Cable Diameter "A"		Across Flats "D"	Across Corners "D"
	Standard					
	Metric	Thread Length (Metric) "E"	Min	Max	Max	Max
20	M20	10.0	10	14.0	27.0	29.7
25	M25	10.0	14.1	20.0	36.0	39.6
32	M32	10.0	17.0	26.3	41.0	45.1
40	M40	15.0	23.5	32.2	50.0	55.0
50	M50	15.0	35.6	44.0	60.0	66.0



JAHANNOOR
EMOTIONAL POWER OF LIGHT

📍 **Central office: North Sohrvardi St., East Hoizeh St., No. 25**

Postal code: 1558618393

📞 021 8853 9970

📠 021 8853 6126

📍 Factory: Site 1: Beginning of Abali Road, Etihad Street, West 12th Street, No. 27

📍 Factory: Site 2: Shams Abad Industrial Town, Baharestan Boulevard, Development Phase, between Azadi and Bo Ali Boulevards, Jahan Noor Industrial Group

www.jahannoor.com

✉ SALES@JAHANNOOR.COM

